



MYUAV® Tethered drone

# Tethered Drone System Solution Provider



MYUAV TECHNOLOGIES CO.,LTD.

Add:No.89,Pingliang Avenue,  
Nanjing, China

[myuav@myuav.com.cn](mailto:myuav@myuav.com.cn)

# Introduction

**MYUAV TECHNOLOGIES Co., Ltd.** was incubated in 2018 under the framework of its parent company and officially began independent operations in 2021. As a technology-based enterprise in Jiangsu Province, the company secured investment from the Nanjing Government Fund in 2022. It has established a full-chain system spanning "R&D, production, and testing," with dual bases for marketing and industrial R&D in Nanjing, focusing on overcoming the technical challenges of drone endurance power supply system.

The company's self-developed 1.5kW to 45kW high-power tethered power systems have formed four core scenario-based solutions: Tethered Communication Relay Systems, Tethered Lighting Systems, Dual-Tethered Firefighting Systems, and Dual-Tethered Cleaning Systems, all achieving industry-leading technical specifications. Currently holding over 20 core patents and software copyrights, it has obtained triple certifications in ISO 9001 Quality Management, ISO 14001 Environmental Management, and ISO 45001 Occupational Health and Safety Management. and has expanded to over 20 overseas markets including Europe and the Middle East.

# Honor and Certification



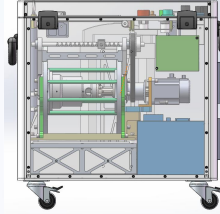
**Continuous  
R&D innovations**

# Intel-Manufacturing

PCB design



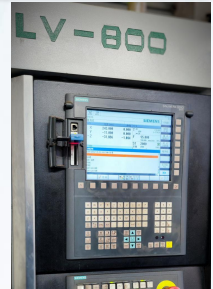
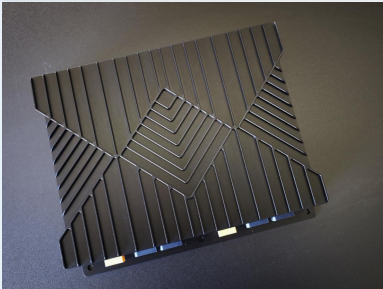
3D design



UAV design



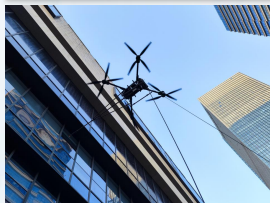
CNC manufacturing



Software



Test

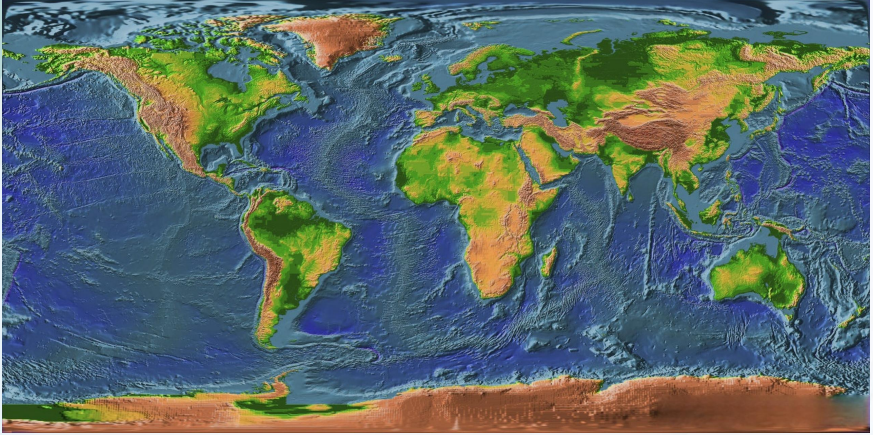


Training





## Service Areas



- China
- Canada
- United Kindom
- France
- Spain
- Italy
- Greece
- Turkey
- Russia
- Russia
- Iran
- India
- Kazakhstan
- Japan
- Australia
- Korea
- Ukraine
- Lithualia

# Tethered Drone System



# Application Solutions

## Payloads for different scenarios



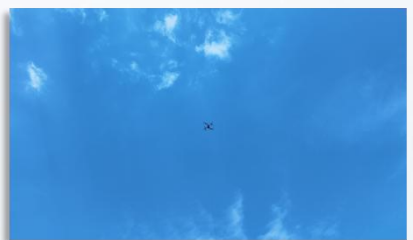
**Building cleaning**



**Fire fighting**



**Emergency lighting**



**Communication relay**

# Tethered Relay

**Ultra-long endurance:** continuous power supply through ground power supply, support 24 hours uninterrupted operation.

**Stable Hovering:** Dual RTK positioning and phased array radar obstacle avoidance enhance flight stability in harsh environments such as strong winds and smoke.

**Fibre optic communication:** Fibre optic data transmission ensures stable signal and low latency, suitable for complex terrain.

**Rapid deployment:** complete deployment within 10 minutes, quickly lift off to establish communication links, suitable for disaster rescue, military exercises and other emergency scenarios.

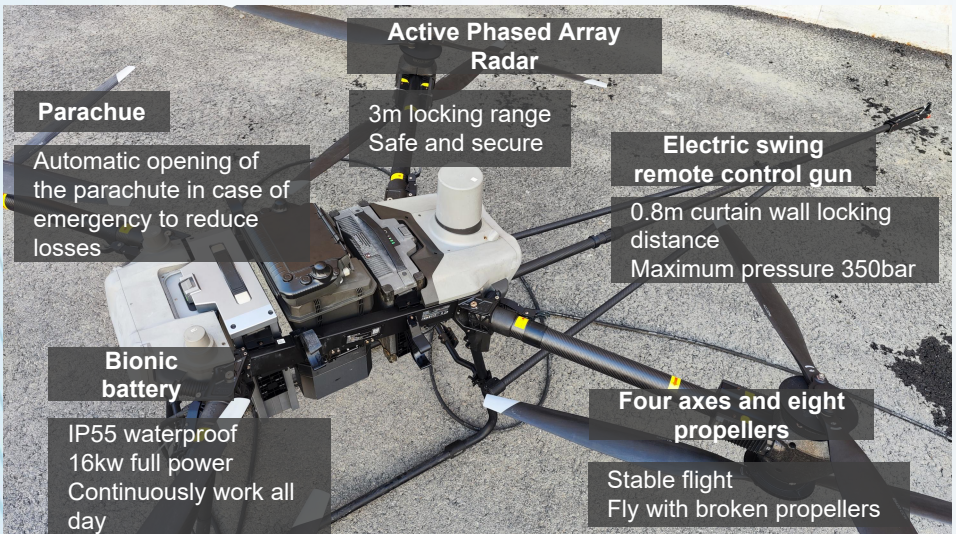
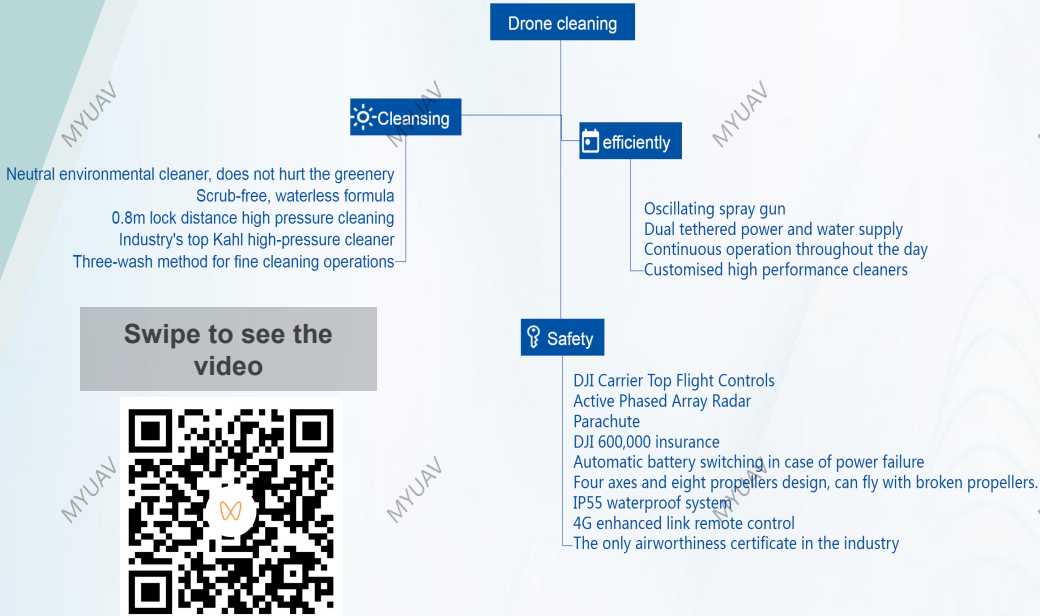
**Environmental Adaptation:** Adaptable to complex environments such as high temperature, smoke and humidity, and resistant to wind of 12m/s.

**Electromagnetic shielding:** special electromagnetic shielding design, significantly reducing interference with communication base stations.





# Dual-tetherd Cleaning





# Dual-tetherd Firefighting

**Fire Response:** Designed for rapid response to emergencies and capable of rapid deployment.

**Tethered Technology:** Adopts tethered technology to maintain continuous operations in the air for long periods of time.

**Fixed-point hovering:** Precise hovering provides a stable aerial platform.

**Data Link:** Maintains real-time data communication with ground control stations for safer flight.

**Environmental Adaptation:** Adapt to complex environments such as high temperature, smoke and humidity, wind resistance 12m/s.

**IP68 waterproof:** IP68 core waterproof design for on-board power supply to meet the fire rescue environment.



Swipe to see the  
video



# Tethered Lighting

**Ultra-long endurance:** with tethered technology, it can remain in the air for a long time for continuous operation.

**Ultra-high brightness:** Equipped with 3.6kW high-brightness LED lights, providing up to 450,000 lumens of illumination. Strong

**adaptability:** with multiple redundancy design to ensure the safety of long time operation.

**Environmental Adaptability:** Adaptable to complex environments such as high temperature, smoke and humidity, with wind resistance of 12m/s.

**Rapid Deployment:** The whole system can be deployed within 5 minutes and supports one-person operation.

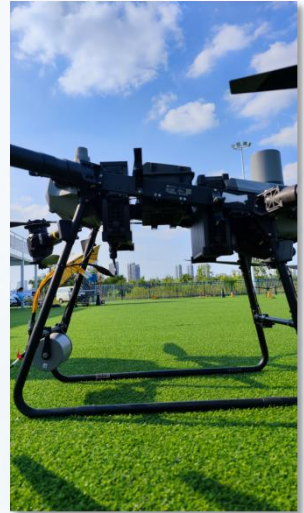


Swipe to see the  
video



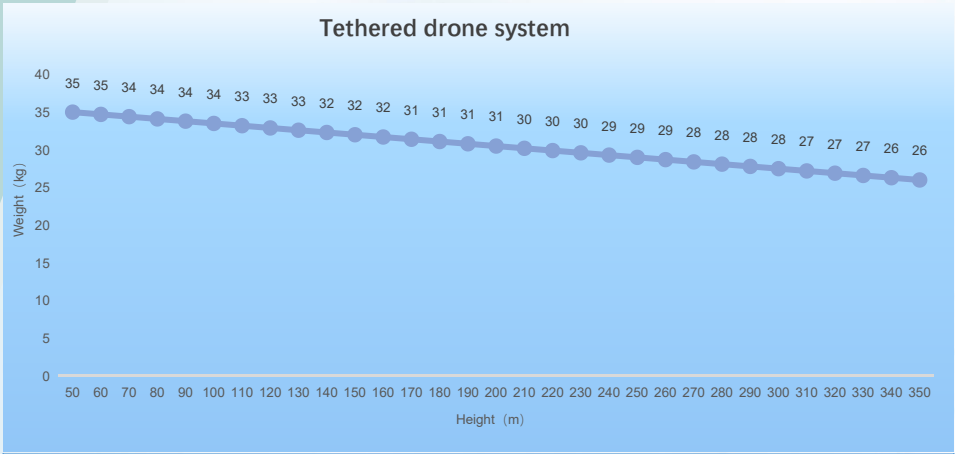
# DJI Flycart 30 Tethered Solution

**Heavier loads, More configurations, Higher efficiency**



1. Standard DC solution, mature and reliable, efficient and stable
2. Redundant load design to ensure stable power supply and long flight duration
3. Ultra-precise voltage regulator circuit, accuracy  $\pm 1\%$ , higher than the industry level
4. Original battery design, plug-and-fly, seamless switching in case of power failure
5. Patented rainproof IP54/waterproof IP68 design, more scenes without fear of wind and rain

# DJI Flycart 30 Tethered Solution



Model	Height	Protection	Max. Out	Scenarios
FC30T	240m	Rainproof	20kw	High Power Mount
FC30X	120m	Waterproof	16kw	Building Cleaning
FC30XF	120m	Waterproof	17kw	Fire Fighting
FC30M	300m	Rainproof	16kw	Public Grid Communication
FC30S	240m	Rainproof	12kw	Emergency Lighting Network relay Public Safety

# DJI Flycart 30T Tethered Solution



Items		Technical parameters
Tethered Station	Input Voltage	AC 380±10%, three-phase, compatible with utility power, generator and other equipment power supply
	Output Voltage	Rated DC1000V
	Output power	Rated 25kw, Max.30kw
	Take-up speed	0 ~ 3m/s adjustable
	Dimension	L×W×H: External Dimensions 68.6x44.8x49.2cm
	Weight	50kg without cable, 60kg with tethered cable
	Material	Aviation aluminium alloy
	Protection	With strong and weak power separation design, with input undervoltage, input overvoltage, output overvoltage, output overcurrent, output short-circuit, output over-temperature protection;
Tether Cable	Working current	Max.25A
	Tensile strength	≥ 300kg cable breaking tension ≥ 300kg
	Cable length	Cable length: 240m, repeatable retractions ≥1000 times.
	Voltage	Input and output voltage ≥3000vdc, cable insulation voltage ≥3500vdc
	Cable weight	3.95kg/100m
On-board Power Supply	Input Voltage	DC 1000V
	Output Voltage	DC 14S 58.5-59.5V constant regulated output Voltage fluctuation less than ±1% with input over-voltage, under-voltage protection and output over-voltage, over-current, short-circuit, over-temperature protection.
	Output Power	20kW(rated long-time power)
	Dimension	L×W×H: 311×138×279mm Same as original battery size
	Weight	6.42kg
	Mounting	Replacement of one FlyCart 30 drone battery, plug and play installation
	Protection Function	Protection grade ≥ IP54 tethered power supply mode, the aircraft can fly and land normally when the power supply is interrupted during flight.



# DJI Flycart 30X Tethered Solution



Items		Technical parameters
Tethered Station	Input Voltage	AC 380±10%, three-phase, compatible with utility power, generator and other equipment power supply
	Output Voltage	Rated DC1000V
	Output power	Rated 20kw, Max.30kw
	Take-up speed	0 ~ 3m/s adjustable
	Dimension	L×W×H: External Dimensions 68.6x44.8x49.2cm
	Weight	50kg without cable, 60kg with tethered cable
	Material	Aviation aluminium alloy
	Protection	With strong and weak power separation design, with input undervoltage, input overvoltage, output overvoltage, output overcurrent, output short-circuit, output over-temperature protection;
Tether Cable	Working current	Max.20A
	Tensile strength	≥ 300kg cable breaking tension ≥ 300kg
	Cable length	Cable length: 120m, repeatable retractions ≥1000 times.
	Voltage	Input and output voltage ≥3000vdc, cable insulation voltage ≥3500vdc
	Cable weight	3.45kg/100m
Input Voltage		DC 1000V
On-board Power Supply	Output Voltage	DC 14S 58.5-59.5V constant regulated output Voltage fluctuation less than ±1% with input over-voltage, under-voltage protection and output over-voltage, over-current, short-circuit, over-temperature protection.
	Output Power	16kW(rated long-time power)
	Dimension	L×W×H: 311×140×379mm Same as original battery size
	Weight	8.8kg
	Mounting	Replacement of one FlyCart 30 drone battery, plug and play installation
Protection Function		Protection class IP55, core component protection class IP68 tethered power supply mode, the aircraft can fly and land normally when the power supply is interrupted during flight.

# DJI Flycart 30XF Tethered Solution



Items		Technical parameters
Tethered Station	Input Voltage	AC 380±10%, three-phase, compatible with utility power, generator and other equipment power supply
	Output Voltage	Rated DC1000V
	Output power	Rated 25kw, Max.30kw
	Take-up speed	0 ~ 3m/s adjustable
	Dimension	L×W×H: External Dimensions 68.6x44.8x49.2cm
	Weight	50kg without cable, 60kg with tethered cable
	Material	Aviation aluminium alloy
	Protection	With strong and weak power separation design, with input undervoltage, input overvoltage, output overvoltage, output overcurrent, output short-circuit, output over-temperature protection;
Tether Cable	Working current	Max.25A
	Tensile strength	≥ 300kg cable breaking tension ≥ 300kg
	Cable length	Cable length: 135m, repeatable retractions ≥1000 times.
	Voltage	Input and output voltage ≥3000vdc, cable insulation voltage ≥3500vdc
	Cable weight	3.45kg/100m
Input Voltage		DC 1000V
On-board Power Supply	Output Voltage	DC 14S 58.5-59.5V constant regulated output Voltage fluctuation less than ±1% with input over-voltage, under-voltage protection and output over-voltage, over-current, short-circuit, over-temperature protection.
	Output Power	17kW(rated long-time power)
	Dimension	L×W×H: 311×140×379mm Same as original battery size
	Weight	9kg
	Mounting	Replacement of one FlyCart 30 drone battery, plug and play installation
Protection Function		Protection class IP55, core component protection class IP68 tethered power supply mode, the aircraft can fly and land normally when the power supply is interrupted during flight.

# DJI Flycart 30M Tethered Solution



Items		Technical parameters
Tethered Station	Input Voltage	AC 380±10%, three-phase, compatible with utility power, generator and other equipment power supply
	Output Voltage	Rated DC1000V
	Output power	Rated 20kw, Max.30kw
	Take-up speed	0 ~ 3m/s adjustable
	Dimension	L×W×H: External Dimensions 68.6×44.8×49.2cm
	Weight	50kg without cable, 60kg with tethered cable
	Material	Aviation aluminium alloy
	Protection	With strong and weak power separation design, with input undervoltage, input overvoltage, output overvoltage, output overcurrent, output short-circuit, output over-temperature protection;
Tether Cable	Working current	Max.20A
	Tensile strength	≥ 300kg cable breaking tension ≥ 300kg
	Cable length	Cable length: 350m, repeatable retractions ≥1000 times.
	Voltage	Input and output voltage ≥3000vdc, cable insulation voltage ≥3500vdc
	Cable weight	3.45kg/100m
Input Voltage		DC 1000V
On-board Power Supply	Output Voltage	DC 14S 58.5-59.5V constant regulated output Voltage fluctuation less than ±1% with input over-voltage, under-voltage protection and output over-voltage, over-current, short-circuit, over-temperature protection.
	Output Power	16kW(rated long-time power)
	Dimension	L×W×H: 311×138×279mm Same as original battery size
	Weight	6.4kg
	Mounting	Replacement of one FlyCart 30 drone battery, plug and play installation
Protection Function		Protection grade ≥ IP54 tethered power supply mode, the aircraft can fly and land normally when the power supply is interrupted during flight.

# DJI Flycart 30S Tethered Solution



Items		Technical parameters
Tethered Station	Input Voltage	AC 380±10%, three-phase, compatible with utility power, generator and other equipment power supply
	Output Voltage	Rated DC750V
	Output power	Rated 15kw, Max.20kw
	Take-up speed	0 ~ 3m/s adjustable
	Dimension	L×W×H: External Dimensions 68.6x44.8x49.2cm
	Weight	42kg without cable, 52kg with tethered cable
	Material	Aviation aluminium alloy
	Protection	With strong and weak power separation design, with input undervoltage, input overvoltage, output overvoltage, output overcurrent, output short-circuit, output over-temperature protection;
	Working current	Max.20A
	Tensile strength	≥ 300kg cable breaking tension ≥ 300kg
Tether Cable	Cable length	Cable length: 240m, Maximum support 350m, repeatable retractions ≥1000 times.
	Voltage	Input and output voltage ≥3000vdc, cable insulation voltage ≥3500vdc
	Cable weight	3.45kg/100m
Input Voltage		DC 750V
On-board Power Supply	Output Voltage	DC 14S 58.5-59.5V constant regulated output Voltage fluctuation less than ±1% with input over-voltage, under-voltage protection and output over-voltage, over-current, short-circuit, over-temperature protection.
	Output Power	12kW(rated long-time power)
	Dimension	L×W×H: 311×138×279mm Same as original battery size
	Weight	4.5kg
	Mounting	Replacement of one FlyCart 30 drone battery, plug and play installation
Protection Function		Protection grade ≥ IP54 tethered power supply mode, the aircraft can fly and land normally when the power supply is interrupted during flight.

# Tether Ground Station

MYUAV® Tethered drone

## Tethered Power System

LG35



size	46x26x41.5cm
weight	22kg
input	220V AC $\pm 10\%$ 50Hz/60Hz
output	420V / 3.5KW
height	120m

### Features

- ※ Automatic voltage compensation, automatic overcurrent protection
- ※ Anti -inverted electric momentum for safe landing
- ※ Isolation design to prevent electric shock
- ※ Low -current alarm for safe flight
- ※ Base station with 485 communication to display datas in real time

LG55/LG70

size	46x26x41.5cm
weight	24kg
input	220V AC $\pm 10\%$ 50Hz/60Hz
output	750V DC / 5.5KW / 7KW
height	120m / 200m





# Tether Ground Station

MYUAV® Tethered drone

## Tethered Power System

MJ100



size	60.5x45x48cm
weight	45kg
input	380V AC 50Hz/60Hz
output	750V DC / 10KW
height	max.300m
features	<ul style="list-style-type: none"><li>* Automatic voltage compensation, automatic overcurrent protection</li><li>* Anti -inverted electric momentum for safe landing</li><li>* Isolation design to prevent electric shock</li><li>* Low -current alarm for safe flight</li><li>* Base station with 485 communication to display datas in real time</li></ul>

size	60.5x45x48cm
weight	45kg
input	380V AC $\pm 10\%$ 50Hz/60Hz
output	750V DC / 20KW
height	max.300m
features	<ul style="list-style-type: none"><li>* Automatic voltage compensation, automatic overcurrent protection</li><li>* Anti -inverted electric momentum for safe landing</li><li>* Isolation design to prevent electric shock</li><li>* Low -current alarm for safe flight</li><li>* Base station with 485 communication to display datas in real time</li></ul>

MJ200



# Tether Ground Station

MYUAV® Tethered drone

## Tethered Power System

### MJ200pro / MJ300

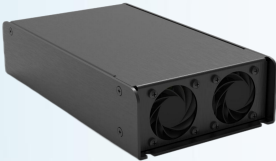


size	68.6x44.8x49.2cm
weight	56kg
input	380V AC $\pm 10\%$ 50Hz/60Hz
output	1000V DC / 20KW / 30KW
height	max.200m
features	<ul style="list-style-type: none"><li>* Automatic voltage compensation, automatic overcurrent protection</li><li>* Anti -inverted electric momentum for safe landing</li><li>* Isolation design to prevent electric shock</li><li>* Low -current alarm for safe flight</li><li>* Base station with 485 communication to display datas in real time</li></ul>

size	68.6x44.8x58cm
weight	60kg
input	380V AC $\pm 10\%$ 50Hz/60Hz
output	1000V DC / 40KW
height	max.180m
features	<ul style="list-style-type: none"><li>* Automatic voltage compensation, automatic overcurrent protection</li><li>* Anti -inverted electric momentum for safe landing</li><li>* Isolation design to prevent electric shock</li><li>* Low -current alarm for safe flight</li><li>* Base station with 485 communication to display datas in real time</li></ul>

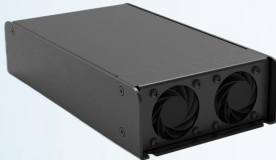
### MJ400





## MP15

Parameters		
•	Weight	0.9Kg
•	Measurement	15.3 x 4.5 x 9.5cm
•	Power	1500W
•	Input	400V d.c.
•	Output voltage	6S Stable Output
•	Output current	60A
•	Auto balance	±5%
•	Efficiency	95%



## MP35

Parameters		
•	Weight	1.15Kg
•	Measurement	18 x 4.5 x 11cm
•	Power	3500W
•	Input	400V d.c.
•	Output voltage	50V d.c. Stable Output
•	Output current	70A
•	Auto balance	±1.5%
•	Efficiency	96%



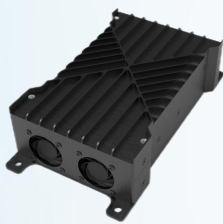
# MP25(DJI M300/M350)

Parameters	
• Weight	• 520g
• Measurement	• 135 x 98 x 95mm
• Power	• 2500W
• Input	• 400V d.c.
• Output voltage	• 6S
• Socket	• M300RTK
• Protection	• Short-circuit protection
• overpressure protection	• 420V



# MP32

Parameters	
• Weight	• 820g
• Measurement	• 168 x 55 x 193mm
• Power	• 3200W
• Input	• 400V d.c.
• Output voltage	• 6S d.c.
• Output current	• 120A
• Auto balance	• ±1.5%
• Efficiency	• 95%



# MP50

## Parameters

- Weight 1.3Kg
- Measurement 18x11x5.5cm
- Power 5000W
- Input 450V d.c.
- Output voltage 50V / 58V d.c.
- Output current 100A
- Auto balance  $\pm 1.5\%$
- Efficiency 96%



# MP60

## Parameters

- Weight 1.3Kg
- Measurement 18x11x5.5cm
- Power 6000W
- Input 750V d.c.
- Output voltage 50V / 58V d.c.
- Output current 120A
- Auto balance  $\pm 1.5\%$
- Efficiency 96%



# MP80



## Parameters

- Weight 2.1Kg
- Measurement 25.2 x 14.4 x 5.9cm
- Power 8000W
- Input 750/1000V d.c.
- Output voltage 58V d.c. Stable
- Output current 130A
- Auto balance  $\pm 1.5\%$
- Efficiency 96%

# MP100



## Parameters

- Weight 2.26kg
- Measurement 25.2 x 14.4 x 5.9cm
- Power 10000W
- Input 1000V d.c.
- Output voltage 58V d.c. Stable
- Output current 172A
- Auto balance  $\pm 1.5\%$
- Efficiency 96%

## MP120



### Parameters

• Weight	3.1Kg
• Measurement	28.8*25.2*5.9cm
• Power	12kW
• Input	750V d.c.
• Output voltage	12S. 14S. 18S
• Output current	205A
• Auto balance	±1.5%
• Efficiency	96%

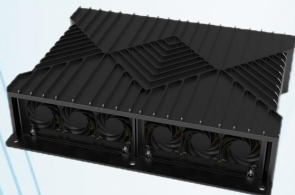
## MP160



### Parameters

• Weight	4.8Kg
• Measurement	28.8*25.2*5.9cm
• Power	16kW
• Input	1000V d.c.
• Output voltage	14S. 16S. 18S
• Output current	270A
• Auto balance	±1.5%
• Efficiency	96%

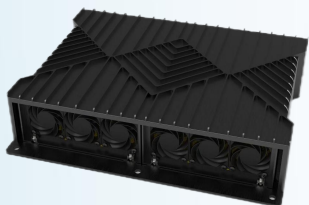
## MP180



### Parameters

• Weight	5Kg
• Measurement	28.8*25.2*5.9cm
• Power	18kW
• Input	1000V d.c.
• Output voltage	14S. 16S. 18S
• Output current	306A
• Auto balance	±1.5%
• Efficiency	96%

## MP200



### Parameters

• Weight	5.6Kg
• Measurement	28.8*25.2*5.9cm
• Power	20kW
• Input	1000V d.c.
• Output voltage	14S. 16S. 18S
• Output current	340A
• Auto balance	±1.5%
• Efficiency	96%

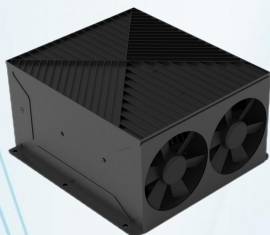
## MP250



### Parameters

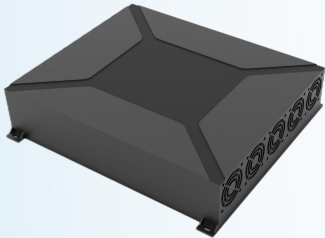
• Weight	6Kg
• Measurement	27x23.2x10.6cm
• Power	25kW
• Input	1000V d.c.
• Output voltage	14S. 16S. 18S
• Output current	425A
• Auto balance	±1.5%
• Efficiency	96%

## MP400



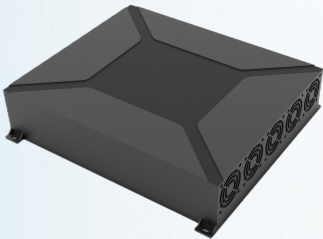
### Parameters

• Weight	16.5Kg
• Measurement	280x360x150mm
• Power	40kW
• Input	1000/1500V d.c.
• Output voltage	14S. 16S. 18S
• Output current	600A
• Auto balance	±1.5%
• Efficiency	96%



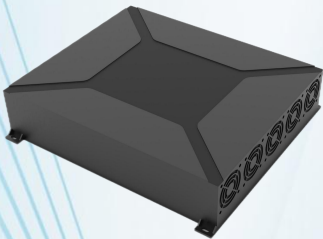
# MP160pro

Parameters		
•	Weight	6Kg
•	Measurement	25.2x24x9.5cm
•	Power	16kW
•	Input	1000V d.c.
•	Output voltage	14S. 16S. 18S
•	Output current	270A
•	Auto balance	±1.5%
•	Efficiency	96%



# MP180pro

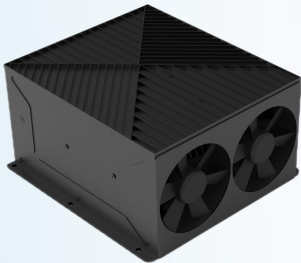
Parameters		
•	Weight	8Kg
•	Measurement	29×24.8×11cm
•	Power	18kW
•	Input	1000V d.c.
•	Output voltage	14S. 16S. 18S
•	Output current	305A
•	Auto balance	±1.5%
•	Efficiency	96%



# MP250pro

Parameters		
•	Weight	9.5Kg
•	Measurement	36.5×35×9.5cm
•	Power	25kW
•	Input	1000V d.c.
•	Output voltage	14S. 16S. 18S
•	Output current	425A
•	Auto balance	±1.5%
•	Efficiency	96%

## MP300pro



Parameters		
•	Weight	12.5Kg
•	Measurement	27.6×28.8×15.3cm
•	Power	30kW
•	Input	1000V d.c.
•	Output voltage	14S. 16S. 18S
•	Output current	508A
•	Auto balance	±1.5%
•	Efficiency	96%

## MP350pro



Parameters		
•	Weight	12Kg
•	Measurement	27.6×28.8×15.3cm
•	Power	35kW
•	Input	1500V d.c.
•	Output voltage	14S. 16S. 18S
•	Output current	595A
•	Auto balance	±1.5%
•	Efficiency	96%

## MP450pro



Parameters		
•	Weight	18.5Kg
•	Measurement	39×33.5×19cm
•	Power	45kW
•	Input	1500V d.c.
•	Output voltage	18S
•	Output current	600A
•	Auto balance	±1.5%
•	Efficiency	96%

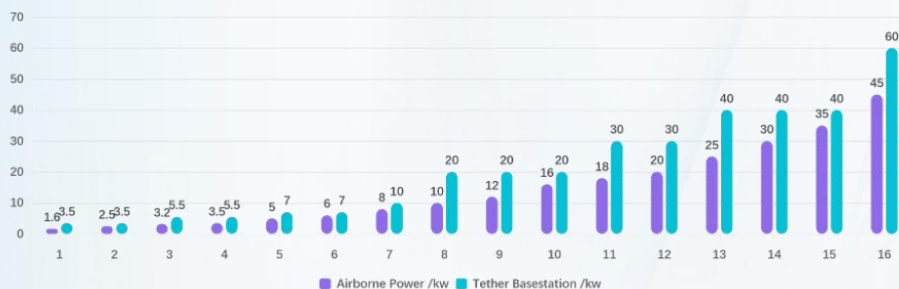


# Combinations

MYUAV® Tethered drone



Power combination



MTOW / Air power combination



\*The total weight of the air stagnation is calculated based on the general situation, and the specific cases need to be analyzed in detail

MYUAV® Tethered drone



迈优威®

MYUAV®

[myuav.com.cn](http://myuav.com.cn)



MyUAV .Brian  
WhatsApp 联系人



T: +86 25 6952 1609  
M: [myuav@myuav.com.cn](mailto:myuav@myuav.com.cn)  
W: [en.myuav.com.cn](http://en.myuav.com.cn)